

NOTES

- The framer shall erect the trusses in a safe manner meeting all code, local, and OSHA requirements. The framer shall temporarily brace the trusses during erection to prevent accident or injury. The framer shall install permanent bracing as required by the BCSI or other documents.
- The framer is to follow general industry recommendations for attachment to non-load bearing walls and carefully complete these details to avoid any gypsum wall board related problems.
- The wood components shown on this drawing are to be used in dry service (moisture content < 19%) and non toxic environmental applications UNO. The metal truss plates and connectors are galvanized to meet or exceed G60 UNO.
- Specific truss information shall be located on the truss design drawing. Please review and understand all information shown on the truss drawings.
- Locate all plumbing, HVAC, and floor / roof / ceiling openings prior to placing trusses. Trusses may be shifted a maximum of 3" for plumbing drops. **DO NOT CUT, DRILL, OR NOTCH TRUSSES.**
- If there are any truss to truss or other member connections not shown on the plans or layout, contact us for further information.
- This truss placement plan and design drawings are the property of Builders FirstSource and may not be reproduced in part or in total under any circumstances without written authorization. Details on these drawings may not be used for other projects.
- Field framing, including valley rafters, installed over trusses shall have a knee brace from the rafter to the truss top chord at intervals of 48" O.C. or less. Stagger knee braces from adjacent rafter to distribute the load over multiple truss locations; do not concentrate at one location or along a single truss. Truss top chords shall be sheathed continuously or have lateral bracing (purlins) at intervals of 24" O.C. or less. Field frame supports or connections to truss bottom chords must be done at intervals of 48" O.C. or less. Bottom chord bracing shall not exceed the maximum shown on the truss design drawing.
- Truss component design is based upon the supporting structure being structurally adequate, dimensionally correct, and plumb and level so as to correctly support the truss component. If any supporting conditions of the trusses is not correct, contact us for further information prior installation.
- Dimensions are Feet-Inches- Sixteenths.
- Do not cut or modify trusses without first contacting Builders FirstSource.
- Immediately contact Builders FirstSource if trusses are damaged.

- Connection Notes**
- All hangers are to be Simpson or equivalent U.N.O.
 - Use Manufacturer's specifications for all hanger connections U.N.O.
 - Use 10d x 1 1/2" Nails in hanger connections to single ply roof girder trusses.

- Floor Truss Notes**
- Shift truss as required to avoid plumbing traps.
 - Installation Contractor and/or Field Supervisor are to verify all dimensions, trap locations, and options prior to installation

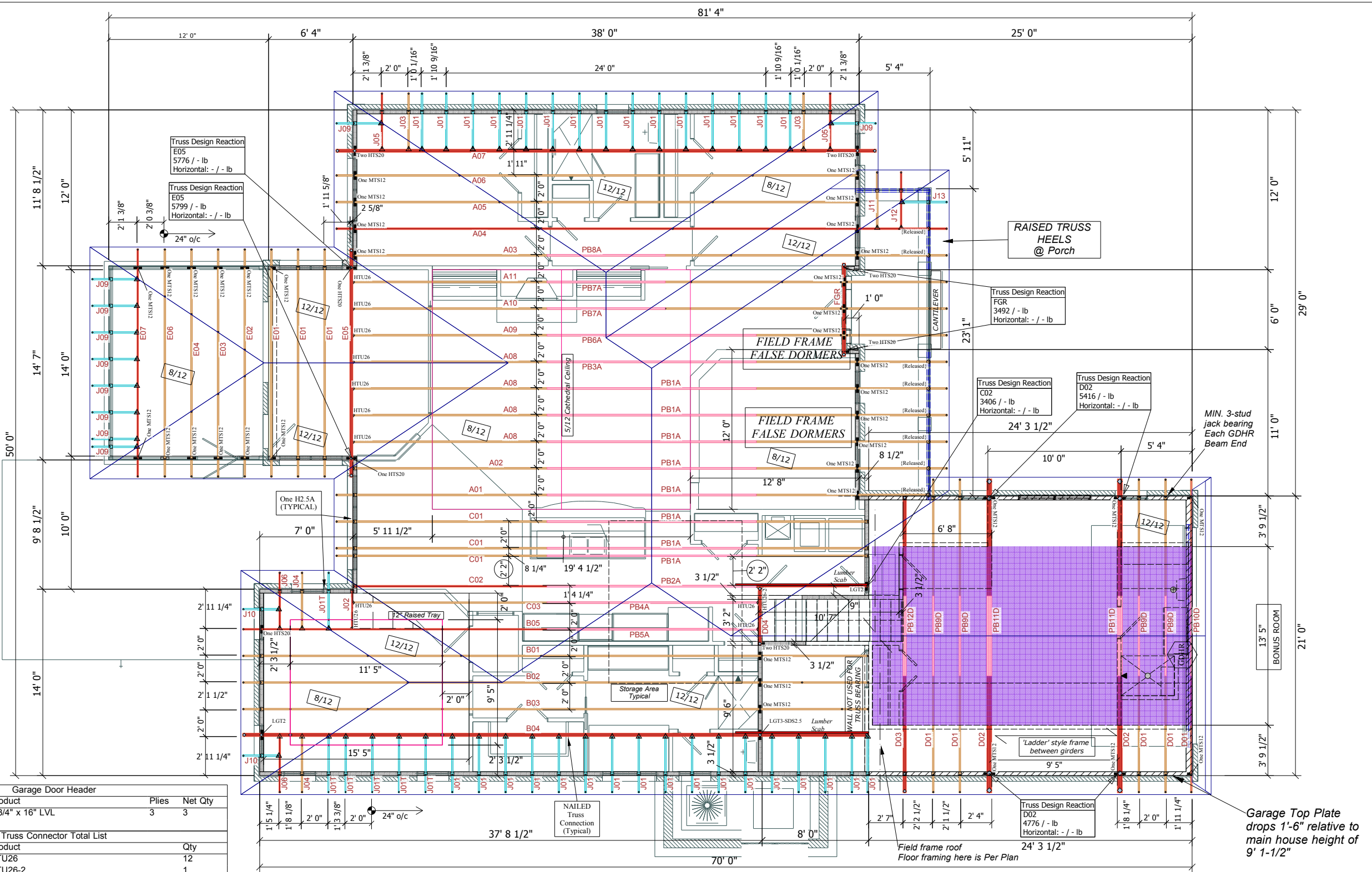
WARNING

Until the building is completely erected in accordance with plans and specifications, the trusses may be unstable and present a safety hazard. Truss instability may increase with building width, height, and length.

Buildings under construction are vulnerable to high winds and present a possible safety hazard. It is the responsibility of the contractor and framer to recognize adverse weather conditions and take prompt and appropriate action to protect life and prevent injury.

Prior to setting trusses, refer to Building Component Safety Information (BCSI) document produced by WTCA and TPI.

- * 24" o/c Typical
- * 9' 1-1/2" 1st Floor Wall & Ceiling Heights [U.N.O]
- * 8' 1-1/2" 2nd Floor over 2x10s @ Garage
- * Pitches Noted



Garage Door Header				
PlotID	Length	Product	Plies	Net Qty
GDHR	18' 0"	1 3/4" x 16" LVL	3	3

Truss Connector Total List		
Manuf	Product	Qty
Simpson	HTU26	12
Simpson	HTU26-2	1
Simpson	H2.5A	85
Simpson	HTS20	15
Simpson	MTS12	50
Simpson	LGT2	2
Simpson	LGT3-SDS2.5	1

Scale:
1/8" = 1'
for 11x17 Paper

Verify Scale with
Known Dimension

Logan Homes
Lot 9, St James
EC-06-0009

Sanderling II

5415 Market St
Wilmington, NC 28405
Phone: 910.799.0986
Fax: 910.799.0993

Job Number
839035

Drawn By
KCH

Date
6-30-16

Revisions



PAGE
NUMBER
1 of 1